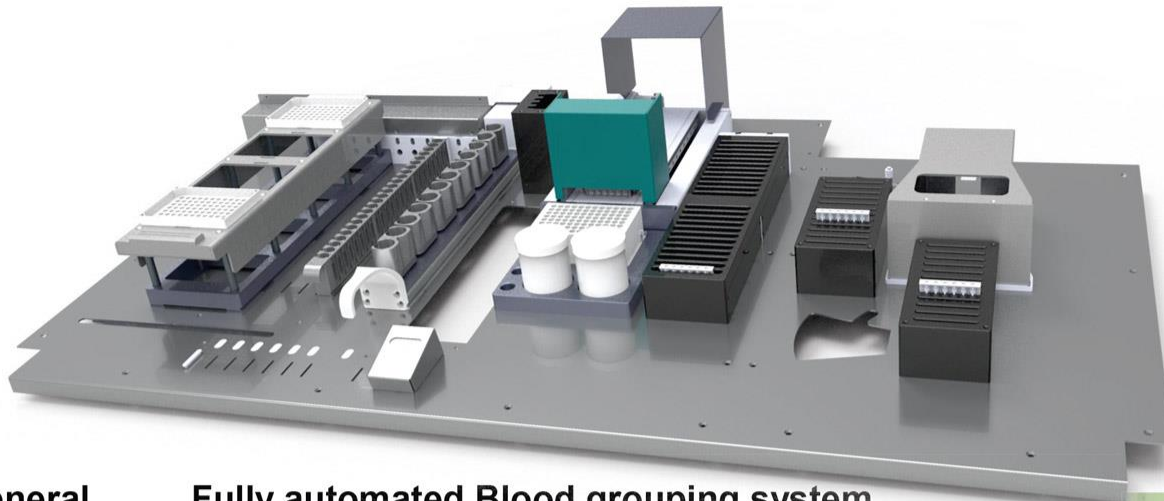




**A+A Diagnostics**

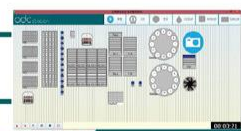
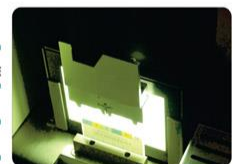
**Innovative technology for your liquid handling applications**

# BGS - 170



## General Fully automated Blood grouping system

<b>Test Menu</b>	Blood grouping/ reverse grouping/ phenotyping/ crossmatching/ antibody screening/ antibody identification/ direct AHG test(DAT)/ single antigens/Rh(D) Rh(CcEe)/Newborn-ABO-Rh/ Rh/k/ ABO DD/Kell/ AHG Polyspecific/ ADK
<b>Typical</b>	up to 96 cards/ hour
<b>Transfer</b>	1 (transfer card)
<b>Pipetting channels</b>	2 (800ul disposable plastic tips, non conductive, low cost, Liquid level, clot, empty tube detection)
<b>Piercing module</b>	12 cards position
<b>Tips rack capacity</b>	384 tips (4 positions, each can hold 96tips)
<b>Pipetting range</b>	Range: 10 to 800ul/ Increment: 1ul
<b>Sample tube</b>	24 X 6 = 144 samples (standard tube diameter 13mm, other diameters on
<b>Sample types</b>	centrifuged whole blood/ packed red blood cells/ 3-5% and 0.8% red cell suspensions/serum or plasma
<b>Reagent module</b>	2 X6=12 blending diluent position+96 deepwell dilution microplate+2 dilution position+2control
<b>Incubation module</b>	12X2=24 cards position (RT- 50°C adjustable at an increment of 0.1°C )
<b>Centrifuge</b>	12X2=24 cards position (maximum speed 3000r/min, Centrifugal time, speed adjustable programming)
<b>Gel card box</b>	24X4=96 card capacity
<b>Barcode scanner</b>	2 (1 for sample and reagent, 1 for gel card)
<b>Reader</b>	High resolution image acquisition interpretation system, automatic interpretation of acquisition and recognition results.The background of back light system, original image is clear and permanent, easy to query and tracking.  Completely intellectual property rights, humanization design, Wizard-style user interface, easy to use Bi-directional LIS/HIS connection, evaluate and send results Software interface synchronous operation, synchronous refresh, visual display running
<b>Software</b>	Operating process real-time monitoring, early warning function with abnormal situation Perfect function of experiment process tracking function of full trace ability tracking analysis and quality control.  Powerful memory storage support testing result recheck include original picture, sample nubner, reagent message,reading result,operator,testing time,test protocol, test method and etc.
<b>Certification</b>	ISO 13485:2003 ISO9001:2008



**A+A Diagnostics GmbH**  
 Auf der Heide 15 • D- 37351 Dingelstädt  
 Federal Republic of Germany  
 P: +49 (0) 36075-439-342 Fx -308  
 e-mail: info@aa-diagnostics.de  
 URL: http://www.aa-diagnostics.de